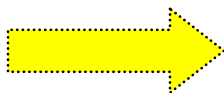


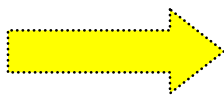
# Little Free Pantry Guide



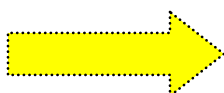
The little free pantry builds upon the little free library concept of neighborhood sharing; helping stock and share food or personal products in communities. It's tagline is "Take what you need, give what you can." This helps neighborhoods support those experiencing food insecurity. It is not bound by anything more than its tiny walls can hold, open to any at anytime. This guide provides concepts for placing, building, and stocking a little free pantry (LFP) for your own community.



Placement in Your Community ..... 2



How to Build +Examples ..... 3 - 5



What to Stock ..... 6

When your little free pantry is built, placed, and stocked; map it online: <http://mapping.littlefreepantry.org/>

# Placement in Your Community



The first thing to keep in mind is where your little free pantry will be placed. You want a place for your hard work where it will be welcomed and used, but not overly prominent. You want it to fit the area so as not to overbuild or put it in a place where it may not be viewed as a welcome piece. Always get permission from the city, landowner, homeowners association, etc. before placing a little free pantry on public or private property. Sometimes cities or homeowners associations even have ordinances concerning the look or feel of a neighborhood, or about giving away free food. Besides visibility, think about the amount of weather the pantry will be exposed to. Try and place on a north or east side of buildings, under trees, or other places where they are a bit more protected from the weather. Once you've checked for any ordinances or permits needed for your chosen area, how do you choose the ideal spot for it?

## Private Property

If you have made one to place on your own property, place it close to the street or another public access point. The point is for people to be able to easily access it without having to come onto private property or feel like they are trespassing in any way.

Aim for a spot that is more in a corner or away from any large windows that buildings on the property may have. It can be a hard decision for someone to take from a pantry, we don't want to make anyone feel as if they are on display. Try and give people the option to be able to use it discreetly.

## Public Property

If you have made one to place on "public" property such as local park, library, school, community garden, or hospital grounds, secure permission from the landowner. These areas are great for more audience exposure, but still see if it can be placed in an out-of-the-way sheltered area.

The other question to ask when placing a LFP on public property is who can check on it for structural damage, restocking of items, or removal of anything that has gotten ruined from hot/cold weather or rain leaks. The goal is for community ownership of the pantry, so items will be kept available and in good condition, but it is always a good idea to have a designated person or entity checking on it once in a while, if possible. All great ideas start off with pure intentions, but how do we keep it moving forward and sustainable?

"We each have a unique role to play in creating a world that lives up to our boldest and brightest vision for sustainability"

# How to Build

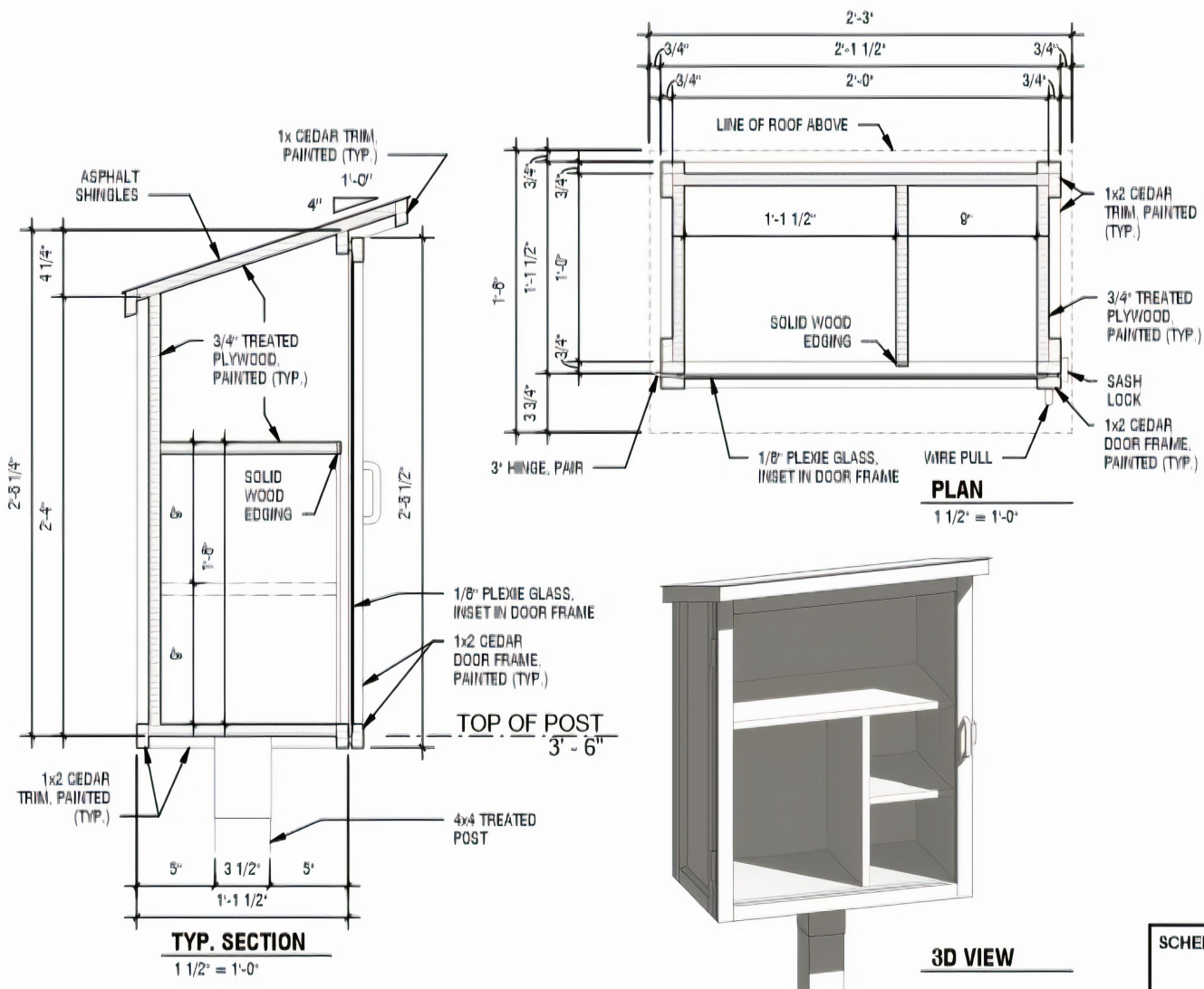


The following little free pantry is a general design to follow. The following pages have a few pictures of other examples, and a simple internet search will show even more examples of others' designs, including repurposing furniture. Check in with your local school shop or carpentry class to see if they could help in building one.

A little free pantry can be most any size and shape; built to fit the needs and design of where it will be placed, plus any creative licensing added. Always keep in mind where your LFP will be so as not to overbuild it in a place where it may not be welcomed as a prominent piece. Know where you are going to place this before you start building.

## Materials List:

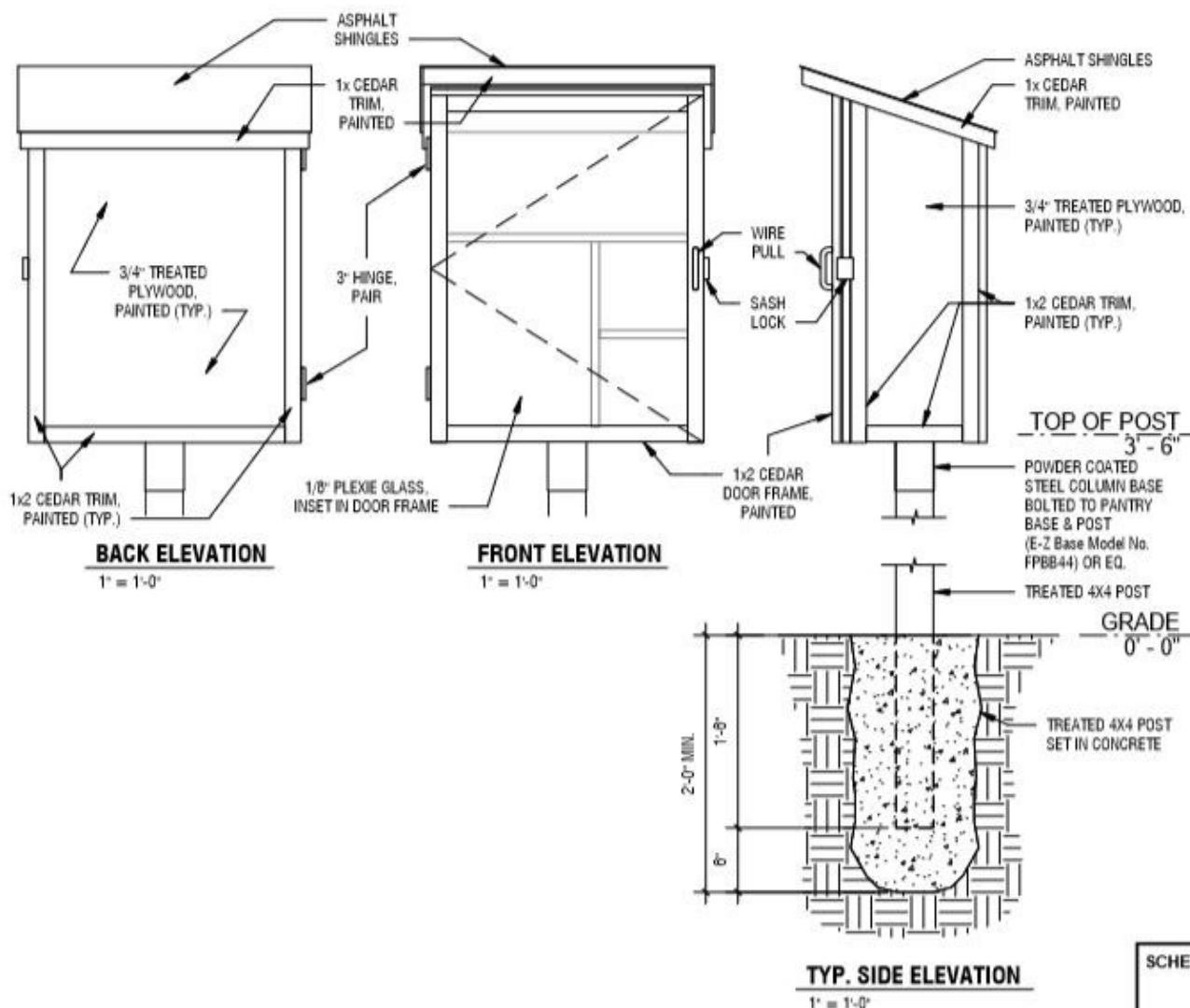
- |  |  |                          |
|--|--|--------------------------|
| 1— $\frac{3}{4}$ " x 4x8 sheet treated plywood | 1— 1lb box $\frac{1}{2}$ to 1 inch roofing nails | 1 sash lock              |
| 6— 1x4x8 boards (treated or cedar)             | 1— 1lb box $1\frac{5}{8}$ inch exterior screws   | 1— 60lb bag concrete mix |
| 1— 4x4x8 treated post                          | 3 $\frac{1}{2}$ square feet of shingles          |                          |
| 1— 4x4 bolt down post flange                   | 1— 24x48 inch acrylic clear sheet                |                          |



TYPICAL DESIGN FOR:  
**LITTLE FREE PANTRY**  
2925 N. Old Missouri Rd | Fayetteville, AR 72703 | [jessica@littelfreepantry.org](mailto:jessica@littelfreepantry.org)

**1.0**

SCHEMATIC DESIGN  
03/28/2017



TYPICAL DESIGN FOR:  
**LITTLE FREE PANTRY**

2925 N Old Missouri Rd | Fayetteville, AR 72703 | jessica@littlefreepantry.org

**20**

SCHEMATIC DESIGN  
03/28/2017

**You can place the following description inside the door**

**Get Fit  
Itasca**

### How Does This Little Free Pantry Work?

This little free pantry is an easy way for neighbors to help neighbors who need food, hygiene, or paper items. Tidy the mini pantry if it needs it. If you can, clean up spills, and please don't litter.

**Give what you can** by placing food, hygiene, or paper items inside. Give what you would want to receive. An easy rule of thumb: buy extra of what you buy for your household. Items should be unexpired and in good condition.

**Take what you need.** If you find items inside and you need them, take them and know we care about you. Please remember this pantry belongs to all of us and take only those items you need, trusting the little free pantry will be here for you again.



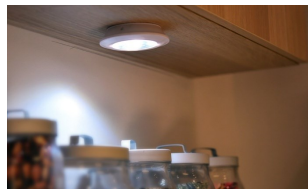
# Examples



Switch up the configuration of the shelves



Two large shelves or attached to a deck



Double doors or try adding in a solar light or small battery powered light



A more prominent roof style

Check out Little Free Pantry's Facebook Page for even more ideas:  
<https://www.facebook.com/littlefreepantry/>

# What to Stock



Your little free pantry is built, placed, and ready to be stocked! The following are items that are commonly placed in and taken from little free pantries. Make sure items are not expired and in good condition. Keep in mind how any item placed in this pantry will fare. These pantries don't have the luxury of indoor climate control.

**Winter:** Avoid glass jars or canned items; they may explode in freezing temps.

**Summer:** Check glass jars and canned items for bulging sides or tops; trash any that are.

## Non-Perishable Food

- ♦ Cereal
- ♦ Oatmeal
- ♦ Rice or other grains
- ♦ Pasta
- ♦ Ramen
- ♦ Mac & Cheese
- ♦ Canned proteins
- ♦ Canned vegetables
- ♦ Canned fruits
- ♦ Canned soups
- ♦ Granola bars
- ♦ Shelf stable or powdered milk
- ♦ Shelf stable meals
- ♦ Peanut butter
- ♦ Pizza sauce
- ♦ Applesauce
- ♦ Shelf stable parmesan
- ♦ Dried fruit
- ♦ Nuts/seeds/trail mix
- ♦ Bottled water
- ♦ Crackers
- ♦ Popcorn
- ♦ Pretzels
- ♦ Veggie straws/chips
- ♦ Pop tarts
- ♦ Beef jerky

## Personal Products

- ♦ Toilet Paper
- ♦ Paper towels
- ♦ Kleenex
- ♦ Soap
- ♦ Shampoo
- ♦ Conditioner
- ♦ Toothpaste
- ♦ Toothbrushes
- ♦ Deodorant
- ♦ Baby wipes
- ♦ Diapers
- ♦ Feminine hygiene products
- ♦ Garbage bags
- ♦ Sunscreen
- ♦ Bug spray
- ♦ Chapstick
- ♦ Lotion
- ♦ Band-Aids
- ♦ First aid ointments



## Fun Items

- ♦ Bubbles
- ♦ Sidewalk chalk
- ♦ Playing cards
- ♦ Frisbees
- ♦ Jump ropes
- ♦ Colored pencils & paper

## Pets

- ♦ Canned pet food
- ♦ Small toys
- ♦ Poop bag rolls